

NARVA®

THE VISION TO GO FURTHER

NEW PRODUCT RELEASE

AEROTECH® L.E.D STROBE/ROTATOR RANGE



P/No. 85600A



P/No. 85606A



P/No. 85612A

KEY FEATURES

- Designed, engineered and tested in Australia
- Maximum visibility – up to 6 times brighter than SAE
- Aerodynamic shape provides increased visibility
- Ultra durable with 7 year warranty
- Versatile mounting options to suit any application



Designed, engineered and tested in Australia

The conditions and climate in Australia are some of the harshest in the working world. When designing and engineering the AeroTech® range this was taken into consideration. Our engineering and testing goes well beyond these to ensure you don't get let down out in field.

Engineering

Ultrasonic welding seals the strobes from water and dust (IP67). Virtually unbreakable, heavy-duty polycarbonate bases make for a lighter footprint than die-cast bases. The polycarbonate lenses are themselves, virtually unbreakable, and use a special Makrolon 2607 material which is resistant to UV. Solid state circuitry means no moving parts, so no mechanical failures. This attention to detail enables Narva to provide a 7 year warranty. These strobes really are engineered to go further.

Testing

AeroTech® went through exhaustive testing at Narva's in-house testing facility which has been backed by independent approved and accredited labs. AeroTech's® durability testing included thermal shock, vibration (IEC 60068-2-64), mechanical shock, salt spray, IP67 and real world environment tests. We know if a product can last in our hands, then it can last in yours.



AeroTech® environmental testing



AeroTech® has unrivaled daytime visibility

Why are AeroTech® strobes shaped the way they are?

Narva AeroTech® was designed for a unique look but importantly the shape has real world benefits. The Narva design and engineering teams developed AeroTech's® signature "trilobular" shape, which served to provide two clear benefits when compared to the same size round strobe:

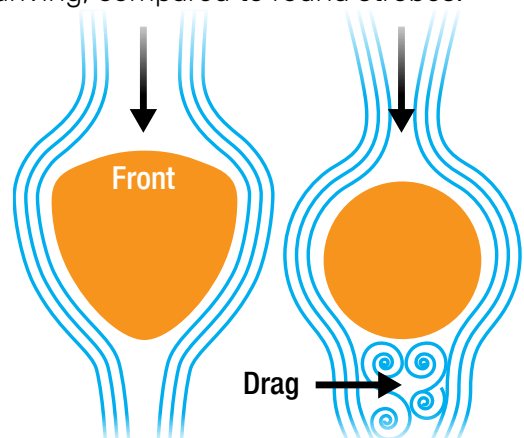
Visibility

The primary function of a warning light is to be seen. AeroTech's® unique trilobular shape creates a greater horizontal surface area of visible light.* This larger area of illumination translates to better visibility and a safer work site.



Aerodynamics

The trilobular shape allows smoother airflow around the strobe, resulting in up to 60% less drag.* The real world benefit of this is less high speed wind noise while driving, compared to round strobes.



*Compared to a comparable size round strobe.

STROBE/ROTATOR RANGE

Engineered for maximum visibility

The AeroTech® range of strobes was designed to be the brightest and most visible strobes of their size. This has been achieved with the combination of precision reflectors, optics and high power L.E.Ds, along with a unique and stylish shape that makes them more visible.

AeroTech® strobes are engineered to produce smooth, highly visible rotating patterns suitable for all civil applications. Unlike most strobes in the market, the rotate pattern on all three sizes of AeroTech® strobes exceed SAE Class 1. This ensures they are visible in even the brightest Australian conditions and meet Heavy Vehicle Regulation 2013 No.77.

Day/Night Light Sensor

Because of their extreme brightness, AeroTech® strobes also include an integrated light sensor which automatically switches the strobe between high and low power modes. This ensures the strobe does not dazzle road users or workers at night or in low light conditions. In addition, the AeroTech® range has a switching wire which allows manual day/night selection for increased user flexibility.

AeroTech® Adaptability

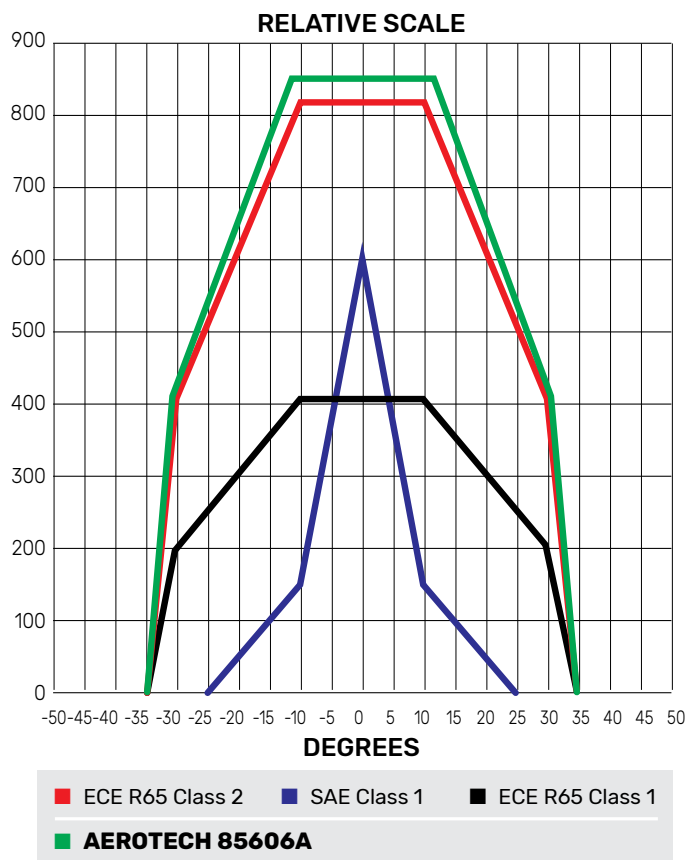
The AeroTech® range has been engineered to include all industry mounting types and suit almost any applications. The three different heights ensure AeroTech® strobes suit small, medium, large and oversize vehicles.

Flange mount (3 bolt), single bolt, pole mount, flexible pole mount and DC vacuum magnetic mount options ensure the ultimate in adaptability from the program. For those wary of stock holdings, the bases are easily interchangeable – for example a flange base can easily be converted to any other base.

In spite of AeroTech's® unique shape, flange base models can still be fitted to existing bolt holes in the correct orientation through the use of an adaptor plate, which allows the strobe to be mounted to any Ø130mm bolt hole and aligned on the vehicle. This adaptor plate is included with 85606A and 85612A models.

Light output standards

AeroTech® meets or exceeds all global standards for output.



Flange Mount

Single Bolt Mount

Pole Mount

Flexible Pole Mount

Vacuum Magnetic Mount

Adaptor Plate



P/No. 85606A



P/No. 85607A



P/No. 85608A



P/No. 85609A



P/No. 85610A



P/No. 85393

AEROTECH® L.E.D STROBE/ROTATOR RANGE

Specifications

	85600A	85606A	85612A
Operating Voltage	10-33V	10-33V	10-33V
Current Draw @ 12V (Rotate, Flash)	0.6A, 1.4A	1A, 1.6A	1A, 1.6A
Max L.E.D Power	40W	90W	36W
Temp Range	-30° – 60°	-30° – 60°	-30° – 60°
CISPR 25	3	3	3
R10	✓	✓	✓
SAE J845	Class 1	Class 1	Class 1
RCM	✓	✓	✓
R65	Class 1**	Class 2	Class 2
RoHS	✓	✓	✓
REACH	✓	✓	✓
Transient Protection	✓	✓	✓
Reverse Polarity	✓	✓	✓
Lens Material	Polycarbonate	Polycarbonate	Polycarbonate
Base Material	Polycarbonate	Polycarbonate	Polycarbonate
IP Rating	IP67	IP67	IP67
Ambient Light Sensor	✓	✓	✓
Synchronizable (Flange)	6 Units	6 Units	6 Units
Flash Pattern Count	4 + Steady On	4 + Steady On	4 + Steady On
High / Low Power Modes	✓ (Low = 40%)	✓ (Low = 60%)	✓ (Low = 60%)
Mounting Diameter	Ø130mm	Ø130mm	Ø130mm
Bolt Holes	3	3	3
Height (Flange)	68mm	88mm	130mm
Base Diameter	142mm	142mm	142mm

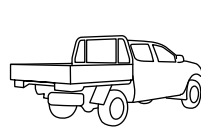
* Specifications are the same for other bases excluding dimensions
Magnetic base speed rating, 120 kph: 85604A, 85610A, 85616A.

**85600A is either SAE Class 1 or ECE R65 (85600A-R65).

Range

PART No.	DESCRIPTION	BARCODE	QTY	BARCODE	QTY	AVAILABILITY
85600A	9-33V L.E.D Strobe Flange (A)	9314464002847	1	19314464002844	12	Ex. Stock
85601A	9-33V L.E.D Strobe Single Bolt (A)	9314464002854	1	19314464002851	20	Ex. Stock
85602A	9-33V L.E.D Strobe Pole Mount (A)	9314464002885	1	19314464002882	20	Ex. Stock
85603A	9-33V L.E.D Strobe Flexible Pole (A)	9314464002922	1	19314464002929	20	Ex. Stock
85604A	9-33V L.E.D Strobe Magnetic Mount (A)	9314464002939	1	19314464002936	12	Ex. Stock
85606A	9-33V L.E.D Strobe Flange (A)	9314464002946	1	19314464002943	12	Ex. Stock
85607A	9-33V L.E.D Strobe Single Bolt (A)	9314464002953	1	9314464002953	20	Ex. Stock
85608A	9-33V L.E.D Strobe Pole Mount (A)	9314464002960	1	19314464002967	20	Ex. Stock
85609A	9-33V L.E.D Strobe Flexible Pole (A)	9314464002977	1	19314464002974	20	Ex. Stock
85610A	9-33V L.E.D Strobe Magnetic Mount (A)	9314464002984	1	19314464002981	12	Ex. Stock
85612A	9-33V L.E.D Strobe Flange (A)	9314464003059	1	9314464003059	12	Ex. Stock
85613A	9-33V L.E.D Strobe Single Bolt (A)	9314464003103	1	19314464003100	20	Ex. Stock
85614A	9-33V L.E.D Strobe Pole Mount (A)	9314464003158	1	19314464003155	20	Ex. Stock
85615A	9-33V L.E.D Strobe Flexible Pole (A)	9314464003165	1	19314464003162	20	Ex. Stock
85616A	9-33V L.E.D Strobe Magnetic Mount (A)	9314464003172	1	19314464003179	12	Ex. Stock
85393	Adaptor Plate T/S Small	9314464004865	1	19314464004862	20	Ex. Stock
85396	Single Bolt Base	9314464003202	1	19314464003209	20	Ex. Stock
85397	Standard Pole Base	9314464003219	1	19314464003216	20	Ex. Stock
85398	Flexible Pole Mount	9314464003226	1	19314464003223	20	Ex. Stock
85399	Suction Magnetic + DC Cable	9314464003233	1	19314464003230	20	Ex. Stock

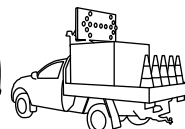
AeroTech® Applications



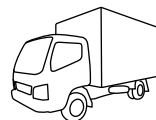
COUNCIL
UTES



LIGHT
COMMERCIAL



ROADSIDE
UTES



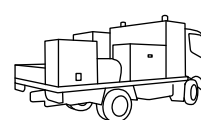
SMALL
TRUCK



COUNCIL
VEHICLES



COUNCIL
TRUCKS



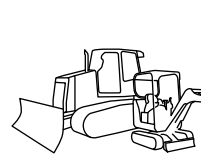
MAINTENANCE
VEHICLES



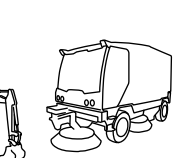
TRANSPORT
TRUCKS



TRACTORS



LIGHT
CONSTRUCTION



ROAD
CLEANERS



OUTDOOR
FORKLIFT