

## TECHNICAL SPECIFICATIONS

<b>Lumens:</b>	6000Lm per pair
<b>Effective Lumens:</b>	Low Beam - 3636Lm (pair) High Beam – 5210Lm (pair)
<b>Voltage:</b>	12/24V
<b>Current draw:</b>	Low Beam – 1.6A @ 12V (H4 only) High Beam – 1.79A @ 12V
<b>IP Rating:</b>	IP65
<b>Colour Temperature:</b>	5800°K
<b>Operating Temperature:</b>	-40°C to +80°C
<b>Warranty:</b>	3 years
<b>EMC:</b>	R10 for RFI Suppression
<b>Vibration tested:</b>	IEC 60068-2-64

## WARRANTY STATEMENT

### Applicable only to product sold in Australia

Brown & Watson International Pty Ltd of 1500 Ferntree Gully Road, Knoxfield, Vic., telephone (03) 9730 6000, fax (03) 9730 6050, warrants that all products described in its current catalogue (save and except for all bulbs and lenses whether made of glass or some other substance) will under normal use and service be free of failures in material and workmanship for a period of one (1) year (unless this period has been extended as indicated elsewhere) from the date of the original purchase by the consumer as marked on the invoice. This warranty does not cover ordinary wear and tear, abuse, alteration of products or damage caused by the consumer.

To make a warranty claim the consumer must deliver the product at their cost to the original place of purchase or to any other place which may be nominated by either BWI or the retailer from where the product was bought in order that a warranty assessment may be performed. The consumer must also deliver the original invoice evidencing the date and place of purchase together with an explanation in writing as to the nature of the claim.

In the event that the claim is determined to be for a minor failure of the product then BWI reserves the right to repair or replace it at its discretion. In the event that a major failure is determined the consumer will be entitled to a replacement or a refund as well as compensation for any other reasonably foreseeable loss or damage.

This warranty is in addition to any other rights or remedies that the consumer may have under State or Federal legislation.

### IMPORTANT NOTE

Our goods come with guarantees that cannot be excluded under the Australian Consumer Law. You are entitled to a replacement or refund for a major failure and compensation for any other reasonably foreseeable loss or damage. You are also entitled to have the goods repaired or replaced if the goods fail to be of acceptable quality and the failure does not amount to a major failure.

Distributed by:

**Brown & Watson International Pty. Ltd.**  
Knoxfield, Victoria 3180 Australia

[www.narva.com.au](http://www.narva.com.au)

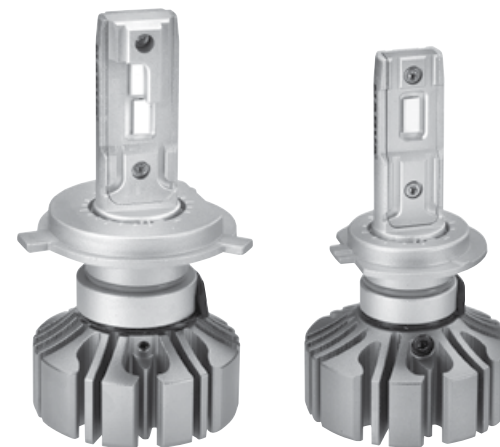
IS500 Issue 1: 22.11.21

# NARVA®

## L.E.D PERFORMANCE GLOBES

### Instructions & Specifications

P/No. 18444 & 18447



## FEATURES

- Precise control of the L.E.Ds creates the correct beam pattern for Australian roads
- Doesn't dazzle other road users
- Adjustable orientation ensures perfect beam pattern
- External Driver - ensures optimal performance and life
- L.E.Ds life is over 30,000 hours
- Provides brighter, whiter light than halogen globes
- EMC certified for no radio frequency interference

## IMPORTANT SAFETY INFORMATION

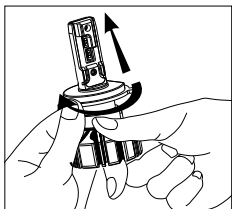


**Before installation please follow the recommended precautions below:**

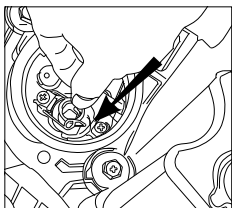
- Ensure the vehicle is parked on a level surface with the handbrake engaged.
- Allow the engine and engine bay to cool to eliminate any chance of burns.
- Disconnect the battery earth cable from the vehicles battery before commencing installation or maintenance.
- Allow globes to cool before attempting to remove from headlamps (minimum 30 minutes recommended after use).
- Avoid touching the glass on halogen globes or the L.E.D chips on L.E.D globes.
- Do not attempt to switch the lamps on before all the connections are made.

NOT ADR APPROVED – FOR OFF-ROAD USE ONLY

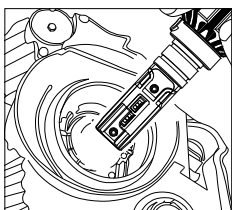
## INSTALLATION STEPS



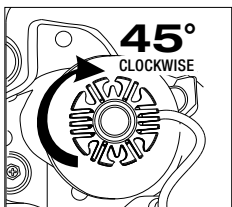
**1** Remove existing halogen globes from headlamps (refer to owner's manual for your vehicle).



**2** Remove the locator ring from the L.E.D. Globe.

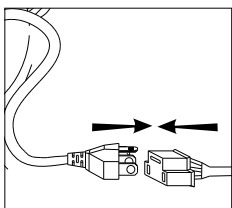


**3** Install and secure the locator ring in the headlight socket

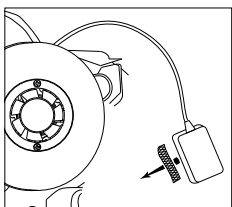


**4** Insert the globe body into the locator ring ensuring to follow the note at the top of page 3.

**5** Rotate globe 45° to secure fitment



**6** Connect the cable with the globe connector.  
(18444 shown)



**7** With the supplied double sided tape, secure the driver to a solid surface. Ensure the area is cleaned before installation.

**TIP:** The light pattern is adjustable by rotating the globe while it is installed.

## NOTE:

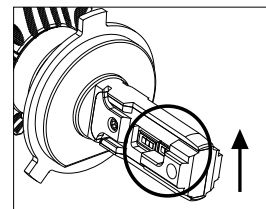


Fig. 1

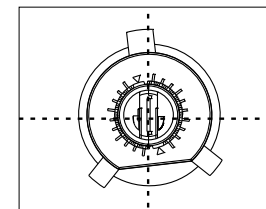


Fig. 2

For the first installation ensure the globe is fitted with the reflector facing upwards (18444) and oriented as figure 2. If the light pattern is not good adjust the beam pattern by rotating the globe.

## TROUBLESHOOTING

Fault	Solution
<b>No illumination from both L.E.D globes</b>	Check battery earth cable has proper connection. Check connections from vehicle harness to L.E.D drivers. Check connections from L.E.D.drivers to L.E.D. globes.
<b>No illumination from one L.E.D globe</b>	Check connections from vehicle harness to L.E.D globes. Swap L.E.D globe from other side, if the globe illuminates the other globe may be faulty.
<b>Partial illumination</b>	Check L.E.D globes for damage during installation and ensure plug is tightly connected to harness correctly.
<b>Not enough light on the road</b>	Adjust vehicle headlights (refer to owner's manual).
<b>Intermittent illumination</b>	Turn off power and pause, turn on again, if L.E.D globe works the problem could be excessive heat build up. Use a larger dust cover to dissipate heat more effectively.
<b>Lights flickering</b>	Install CANBUS* module (sold separately). Resistors are also available if the issue continues with a CANBUS installed.
<b>Warning light on dashboard coming on</b>	Install CANBUS* module (sold separately) to cancel warning light. Resistors are also available if the issue continues with a CANBUS installed.

**\*Note:** Some vehicles use a CANBUS system to detect when a globe is blown or faulty. L.E.D globes draw a fraction of the current of standard halogen and incandescent globes. This may cause some systems to think the globe is faulty, resulting in a warning light on the dash or the lights flickering or pulsing. Please install the correct CANBUS module (sold separately) to eliminate this problem.

**Failure to install appropriate CANBUS module may cause an issue which may require professional attention (i.e. Dealership, Auto Electrician).**