

MODEL 41 SELF CONTAINED L.E.D WARNING LAMPS INSTALLATION INSTRUCTIONS

Suits:

All 85222 Part Numbers

MOUNTING OPTION A — Screws (Rivets)

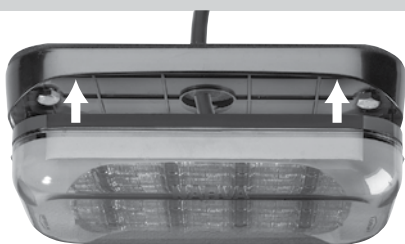
- Drill a Ø 12 mm hole to suit the cable exit.
- Drill 4 x Ø 5 mm holes to suit screws.
- Install screws or rivets and secure base to vehicle.
- Reconnect lamps and snap into base.

MOUNTING OPTION B — Bolts

- Drill a Ø 12 mm hole to suit the cable exit.
- Drill 2 x Ø 8 mm holes to suit bolts.
- If lamps were removed, ensure bolts are located in hexagonal pockets; reconnect lamps and snap into base.
- Install lamp onto vehicle and tighten nuts to secure.

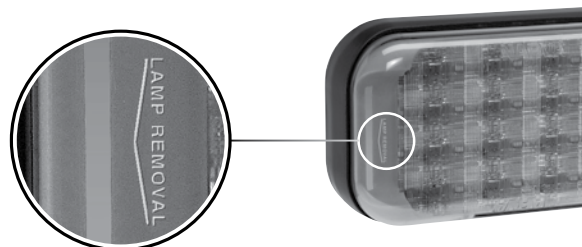
SNAP IN LAMP

- Push firmly and evenly on both sides of the lamp and 'snap' firmly into place.

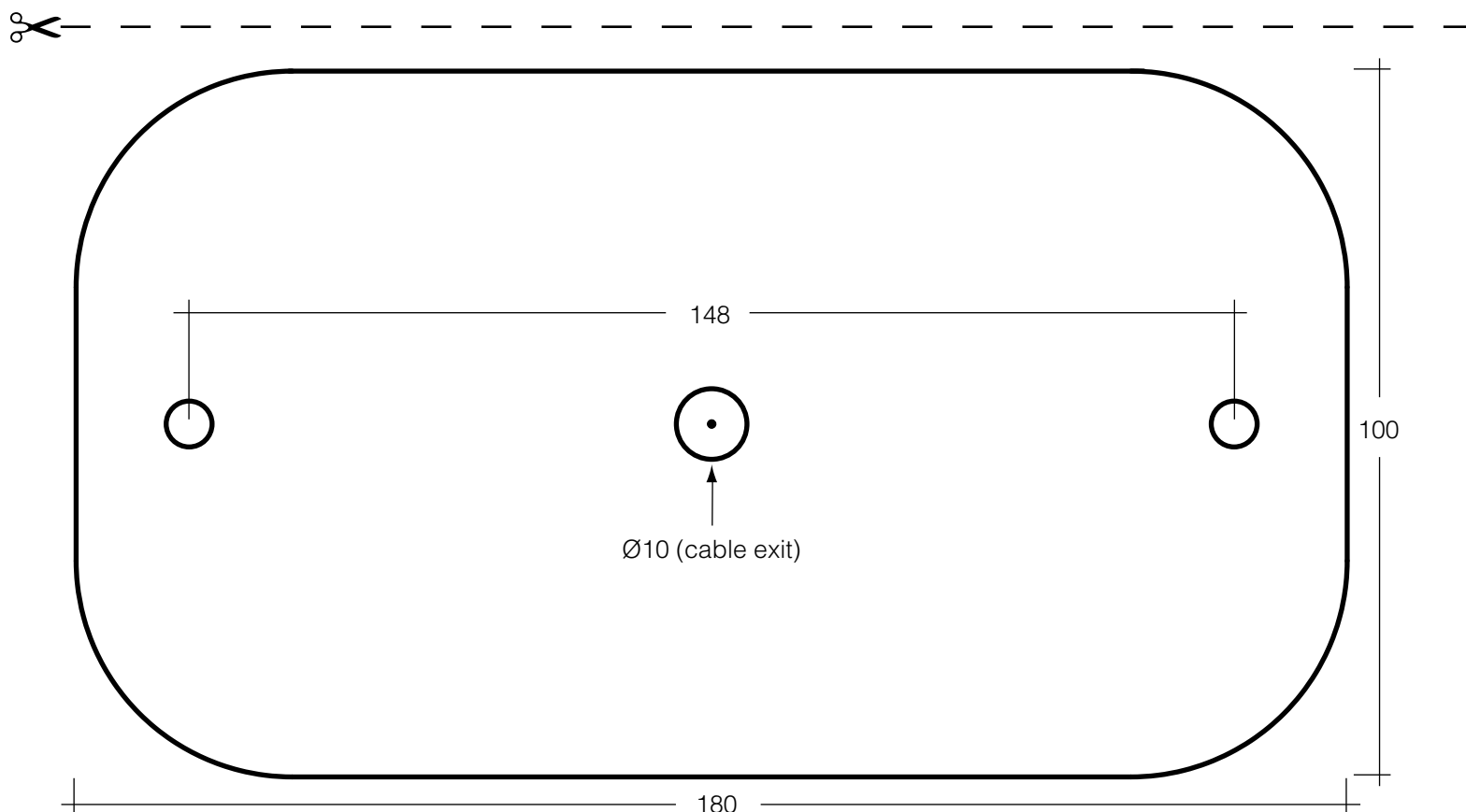
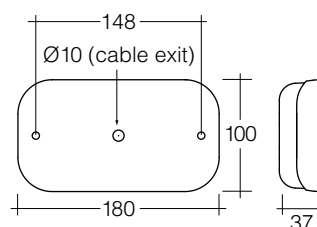


LAMP REMOVAL

- To remove lamp, insert a flat device (e.g. screw driver) between lamp and housing as marked on lamp.
- Carefully push down on device to lever lamp out of housing.



TECHNICAL DRAWING

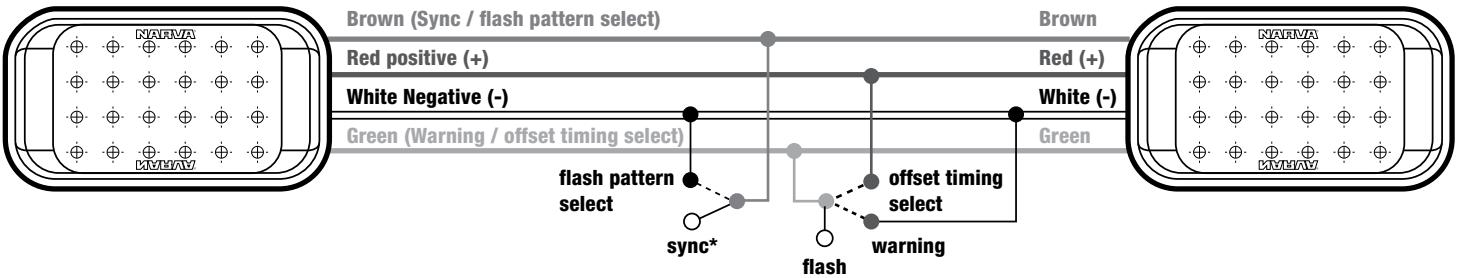


WIRING INSTRUCTIONS & OPERATING MODES

Flash/Normal Mode: lamp will flash in the pattern selected by the user

Warning Mode: lamp will flash in short bursts (quad flashes) intended for emergency situations

Wiring diagram, 2 lamps in synchronized mode



* Note: Connect brown cables to synchronise

Cable connections

Cable Colour	Pin (Deutsch) Positions	Operating Modes		Changing Settings		
		Flash/Normal	Warning	Pattern Selection	Set Offset Timing	Reset
White (Earth)	P1	Neg (-)	Neg (-)	Neg (-)	Neg (-)	Neg (-)
Red (Power)	P3	Pos (+)	Pos (+)	Pos (+)	Pos (+)	Pos (+)
Green	P4	-	Neg (-)	-	Pos (+) Hold to set timing	
Brown	P2	-	-	Neg (-) Touch to change pattern		Neg (-) Hold to reset

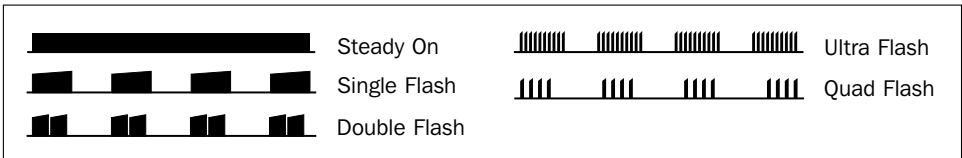
STEP BY STEP INSTRUCTIONS

- 1 Connect the Red cable to positive (+ve) and White cable to negative (-ve).
- 2 To change pattern, quickly touch the Brown cable to negative (-ve); the lamp will turn off for 1.5 seconds then on to preview the selected pattern.
- 3 For 'Warning' mode, connect the Green cable to negative (-ve).
- 4 To synchronise 2 or more lamps, connect the Brown wires of those lamps together (flash patterns must be set to the same pattern).
- 5 Offset timing can be used to synchronise or alternate multiple lamps (by intervals of 90°). To set, touch and hold the Green cable to positive (+ve). The lamp will flash (see below) as it changes timing. Keep holding the Green cable until desired timing is set.

1 flash = 0°	No Offset Timing	2 flashes = 90°	Offset Timing	3 flashes = 180°	Offset Timing	4 flashes = 270°	Offset Timing
--------------	------------------	-----------------	---------------	------------------	---------------	------------------	---------------

- 6 To reset the lamp, touch and hold the Brown cable to negative (-ve) for 2.5 seconds. The lamp will turn on then off to indicate the lamp has been reset.

Flash Pattern Timing



WARRANTY STATEMENT

Applicable only to product sold in Australia

Brown & Watson International Pty Ltd of 1500 Ferntree Gully Road, Knoxfield, Vic., telephone (03) 9730 6000, fax (03) 9730 6050, warrants that all products described in its current catalogue (save and except for all bulbs and lenses whether made of glass or some other substance) will under normal use and service be free of failures in material and workmanship for a period of one (1) year (unless this period has been extended as indicated elsewhere) from the date of the original purchase by the consumer as marked on the invoice. This warranty does not cover ordinary wear and tear, abuse, alteration of products or damage caused by the consumer.

To make a warranty claim the consumer must deliver the product at their cost to the original place of purchase or to any other place which may be nominated by either BWI or the retailer from where the product was bought in order that a warranty assessment may be performed. The consumer must also deliver the original invoice evidencing the date and place of purchase together with an explanation in writing as to the nature of the claim.

In the event that the claim is determined to be for a minor failure of the product then BWI reserves the right to repair or replace it at its discretion. In the event that a major failure is determined the consumer will be entitled to a replacement or a refund as well as compensation for any other reasonably foreseeable loss or damage.

This warranty is in addition to any other rights or remedies that the consumer may have under State or Federal legislation.

IMPORTANT NOTE

Our goods come with guarantees that cannot be excluded under the Australian Consumer Law. You are entitled to a replacement or refund for a major failure and compensation for any other reasonably foreseeable loss or damage. You are also entitled to have the goods repaired or replaced if the goods fail to be of acceptable quality and the failure does not amount to a major failure.