

INSTRUCTION SHEET

P/No. 87570, 87570S & 87570BL

9-33V L.E.D Interior Lamp

INSTALLATION INSTRUCTIONS

- Remove white casing from lamp assembly by turning in a anti-clockwise direction (diagram 1).
- Drill a 10mm pilot hole to suit the cable exit.
- Drill 4 x 2mm pilot hole to suit screws.
- Install screws or rivets and secure base to mounting surface (diagram 2).
- Place white casing on top of lamp base and turn casing in a clockwise direction to lock casing into position (diagram 3).

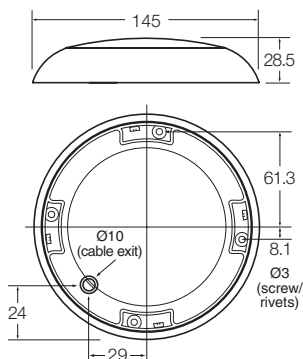


Diagram 1

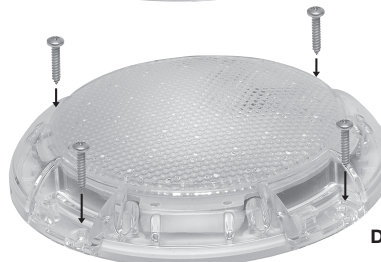


Diagram 2



Diagram 3

WIRING INSTRUCTIONS

Red: Positive (+)
White: Negative (-)

5 Year L.E.D* Warranty

*This warranty guarantees the operation of the L.E.D lamp for a period of 5 years and does not cover physical damage or abuse.

Distributed by:

Brown & Watson Int. Pty Ltd

Ferntree Gully Road, Knoxfield, Victoria 3180

www.narva.com.au

Issue 1: 2.5.11 IS149